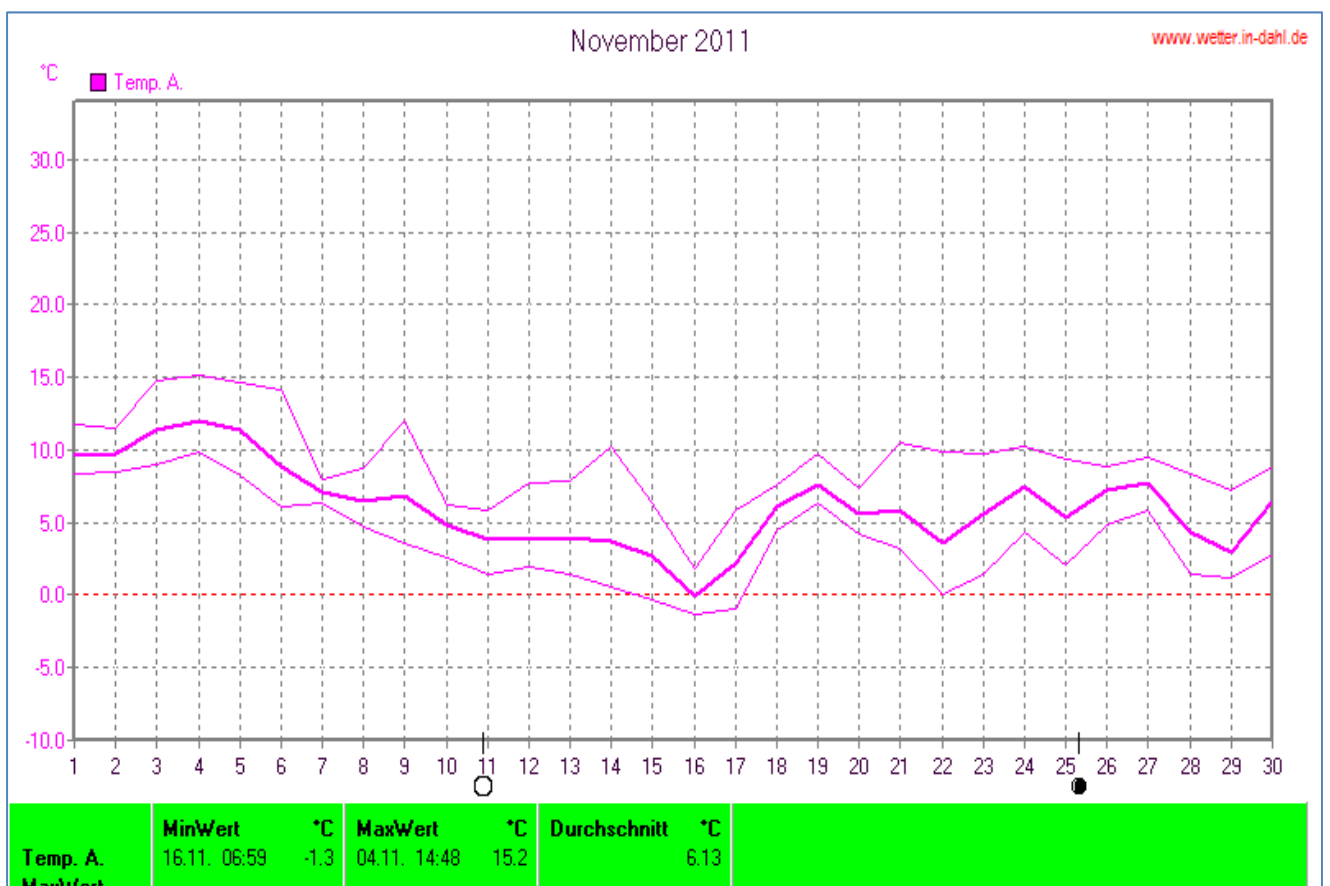
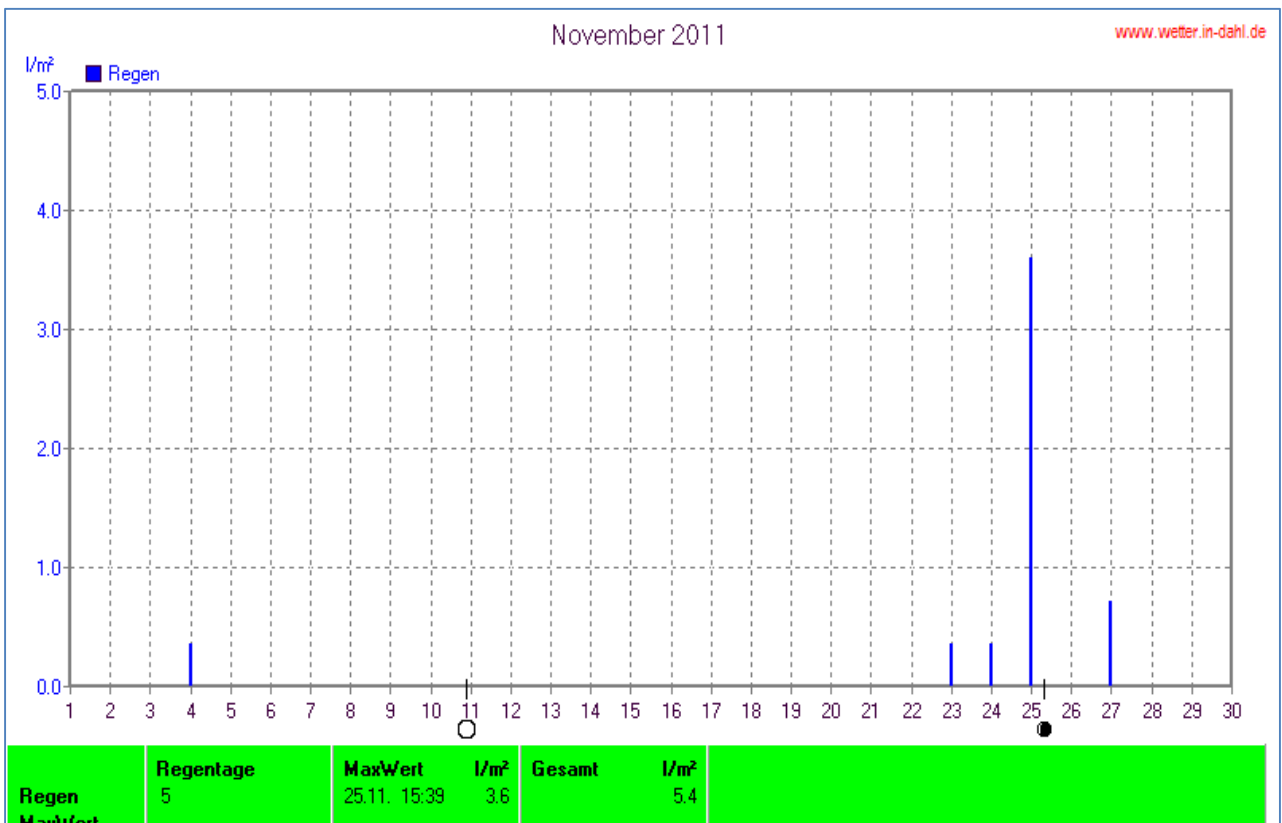
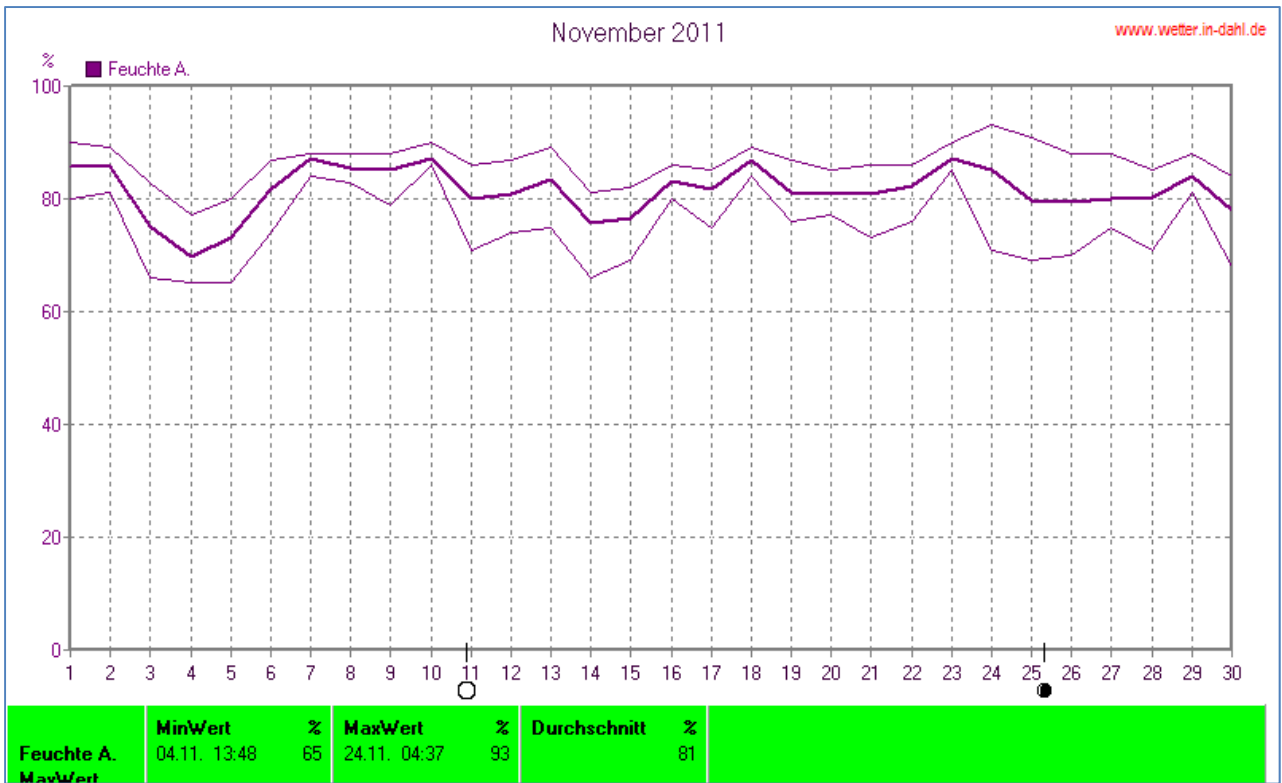
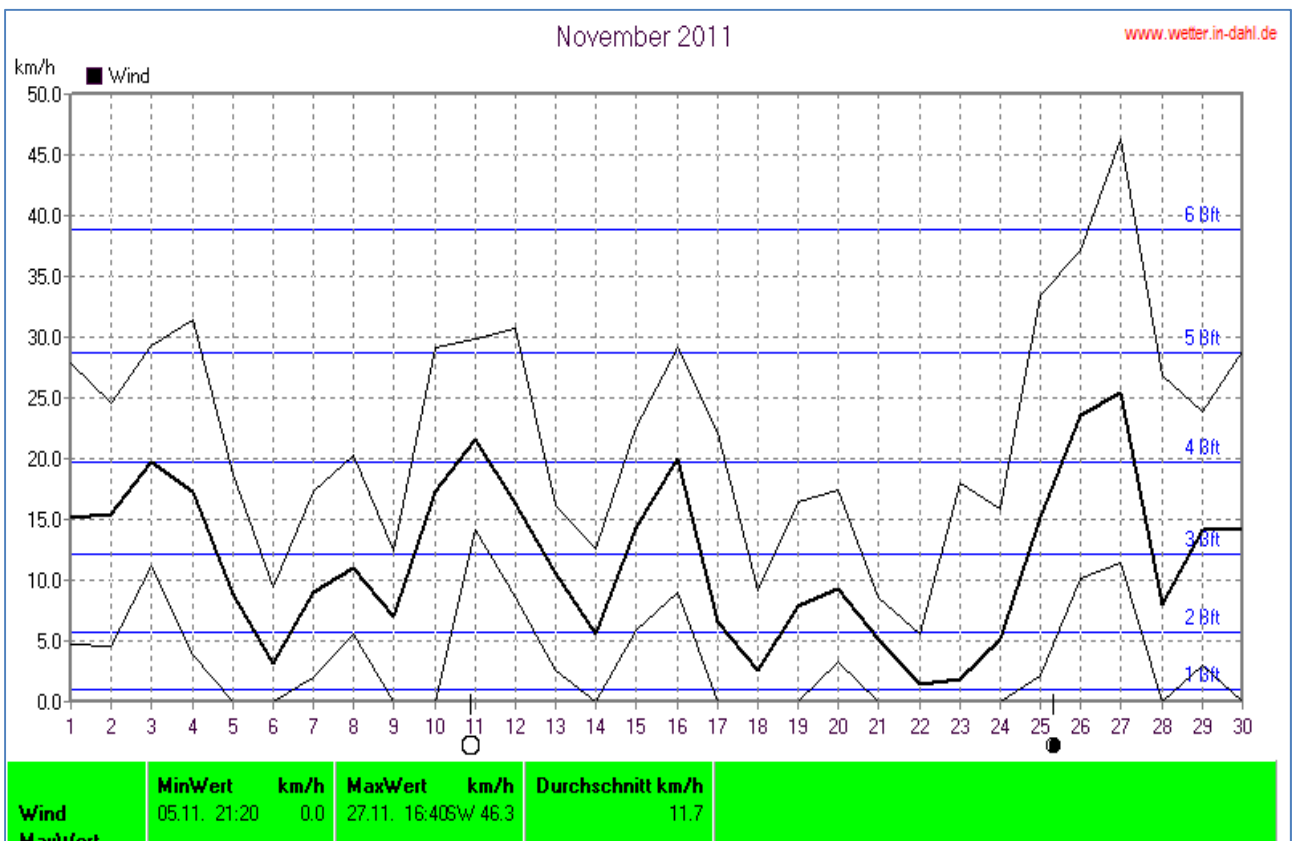
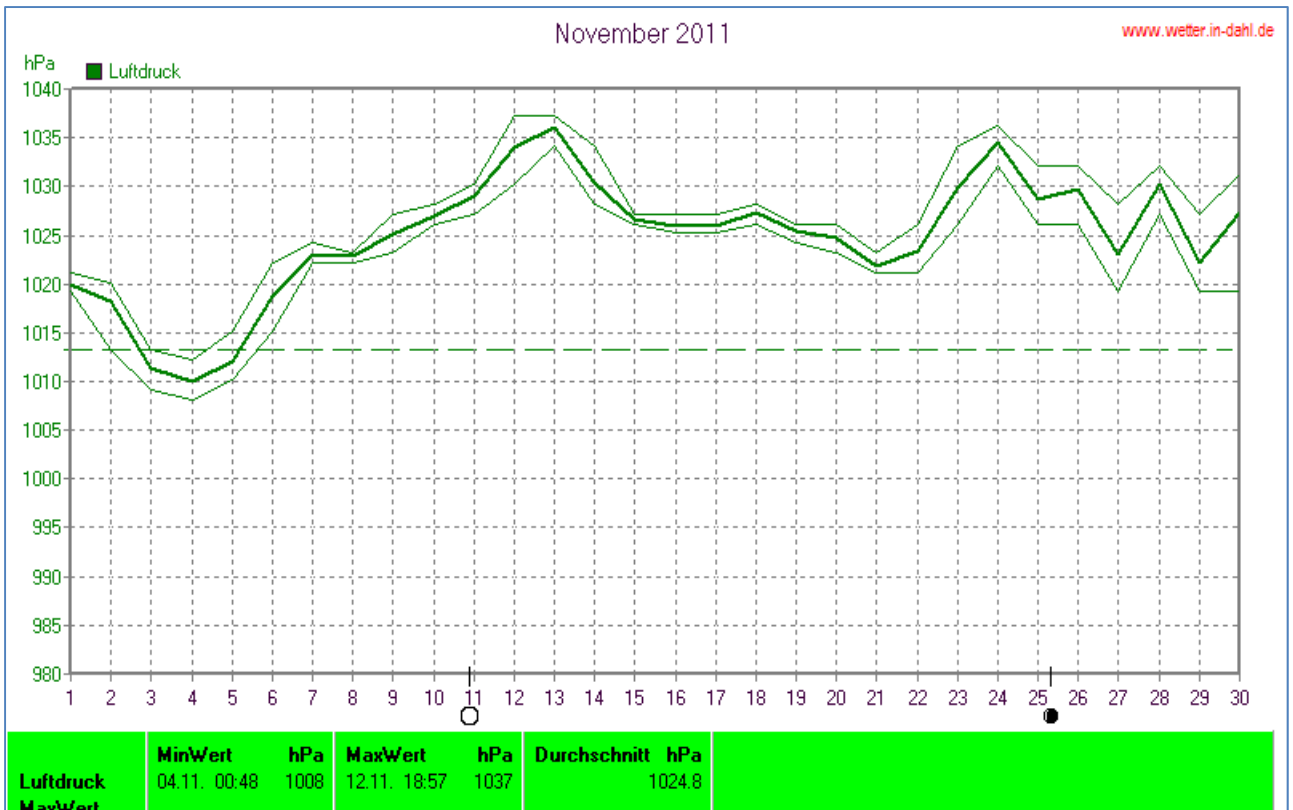


## Wettertabelle und Grafiken November 2011 Station Dahl

<u>Wetterdaten November 2011 Station Dahl</u>							
Meßgröße	Minimum	Zeit	Datum	Maximum	Zeit	Datum	Durchschnitt
Temperatur Außen	-1,3 °C	06:59	16.11.2011	15,2 °C	14:48	04.11.2011	6,1 °C
Bodentemp.	-1,9 °C	07:30	17.11.2011	16,9 °C	13:48	03.11.2011	5,8 °C
Luftfeuchte	65%	13:48	04.11.2011	93%	04:37	24.11.2011	81%
Luftdruck	1008 hPa	00:48	04.11.2011	1037 hPa	18:57	12.11.2011	1025 hPa
Wind km/h				46,3 km/h	16:40	27.11.2011	11,7 km/h
Windrichtung				W-SW	16:40	27.11.2011	S-SO
Regenmenge				3,6 l/m <sup>2</sup>	15:39	25.11.2011	#5,400 l/m <sup>2</sup>
Sonne h				6:32 h	14:27	12.11.2011	#102:35 h

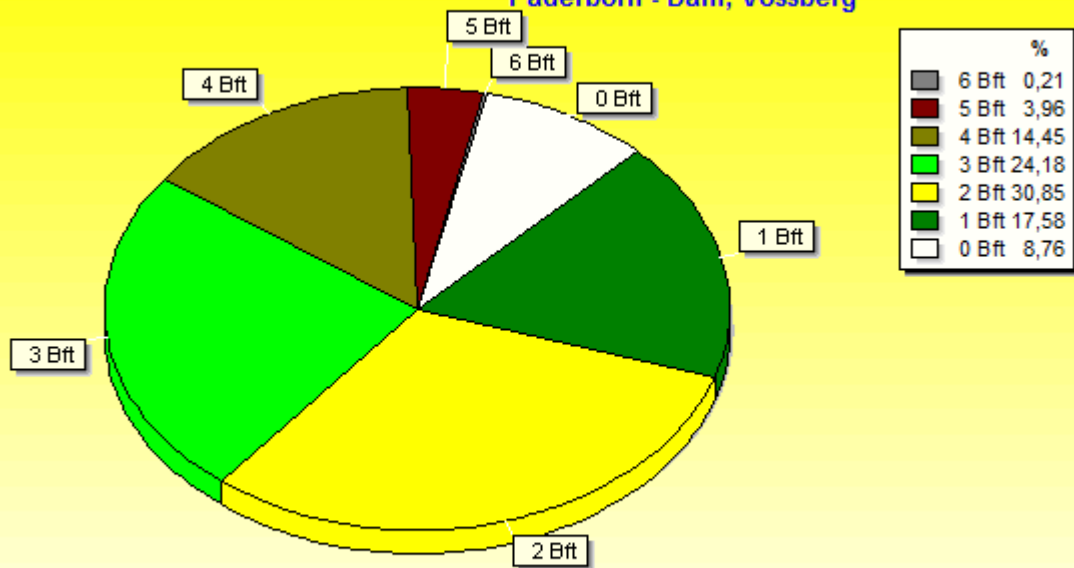






### Verteilung Windstärke November 2011

Paderborn - Dahl, Vossberg

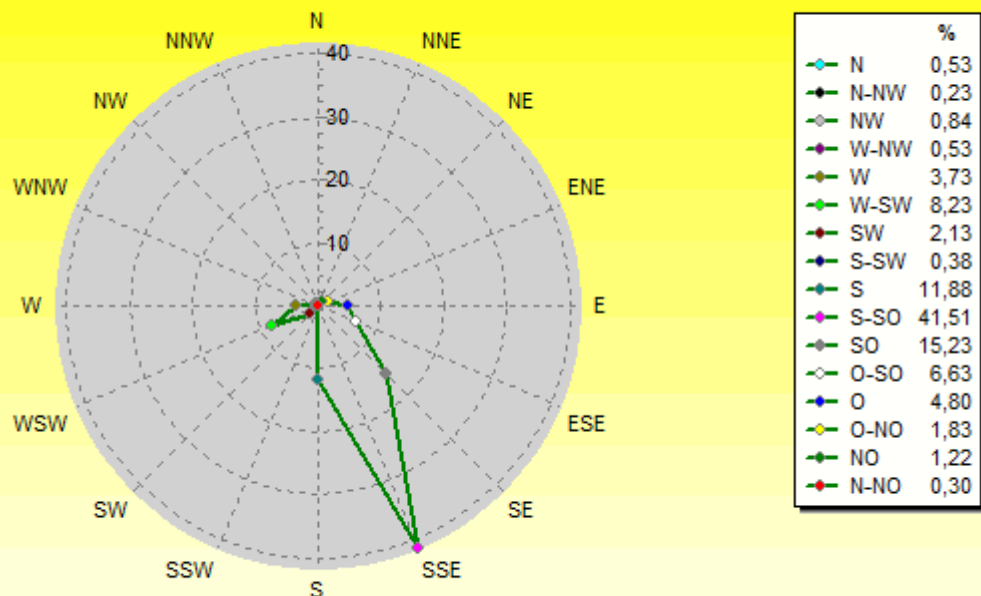


1439 Werte - Ø 11,7km/h - Max. 46,3km/h

© WzWin32

### Verteilung Windrichtung November 2011

Paderborn - Dahl, Vossberg



1313 / 126 Werte -> 8.8% Windstille - Ø 11,7km/h - Max. 46,3km/h

© WzWin32

