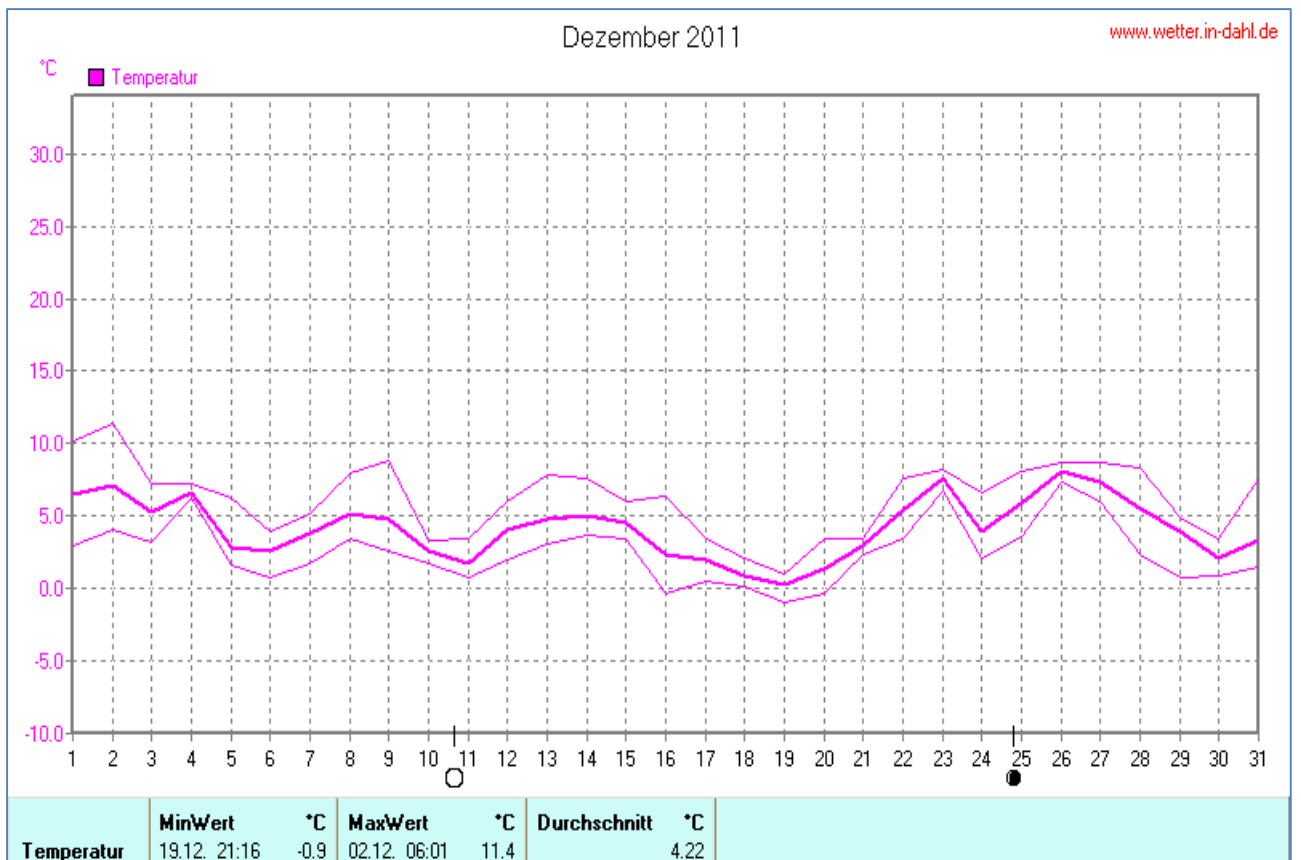
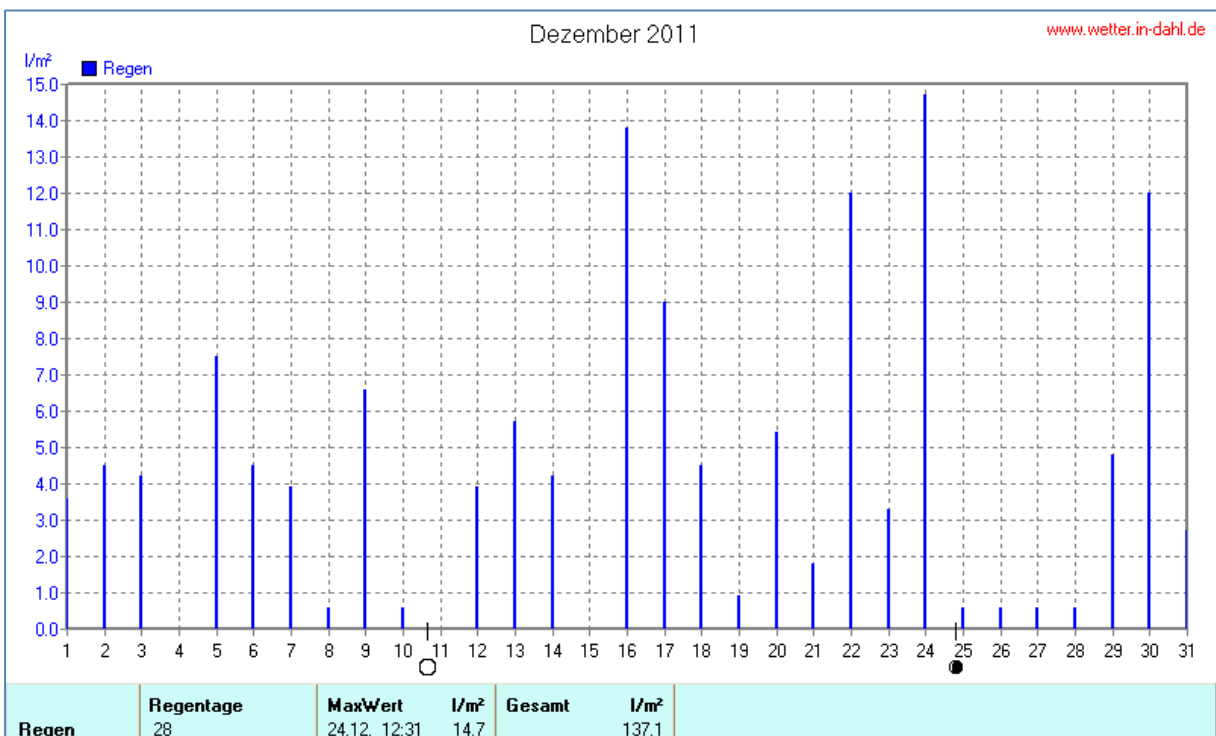
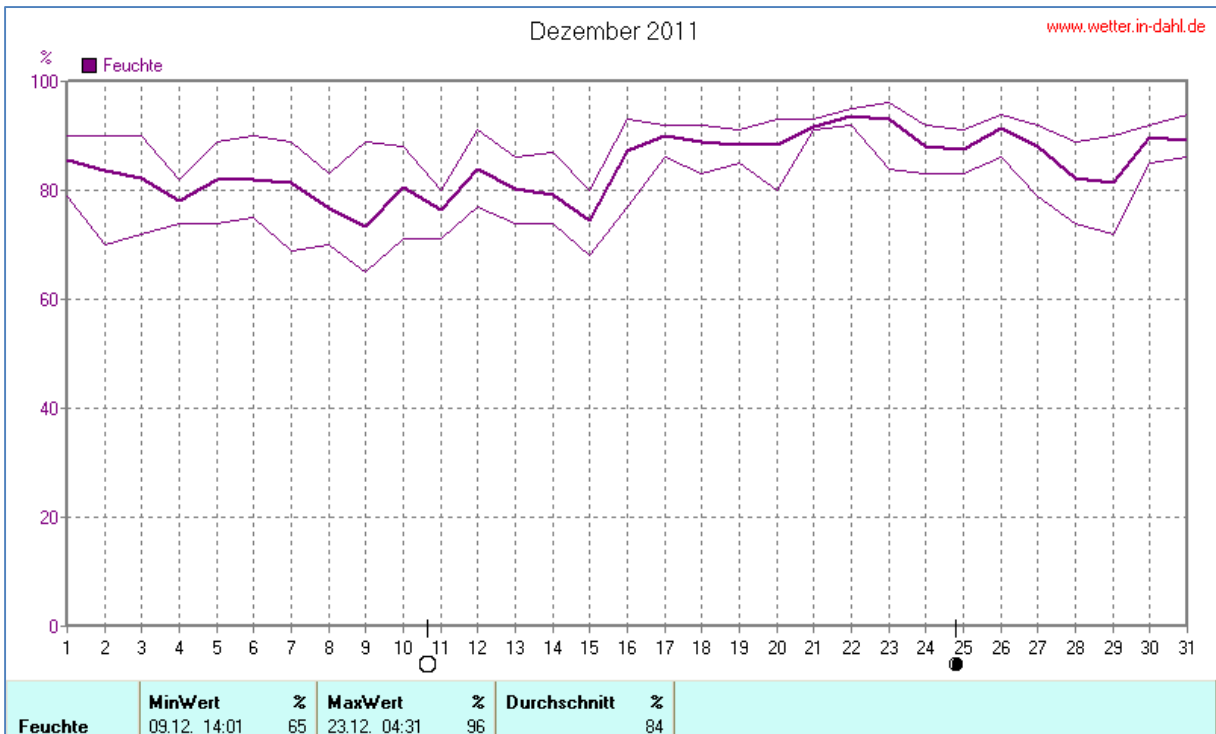
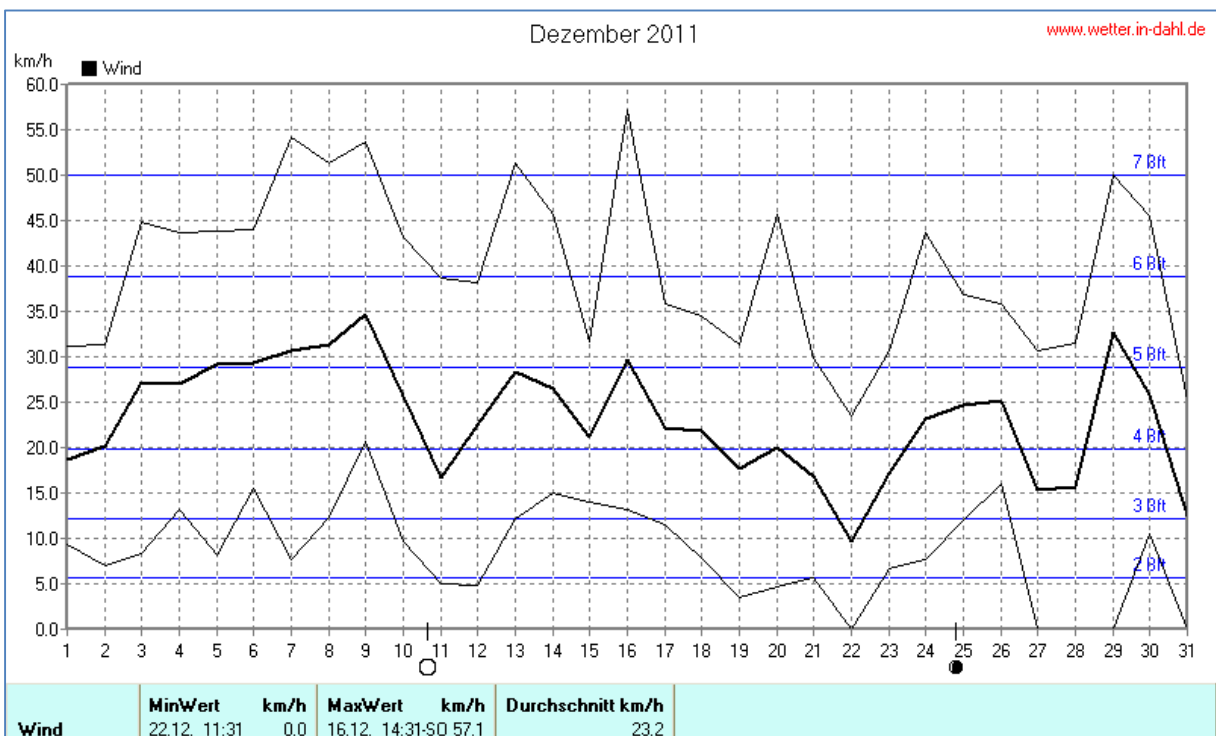
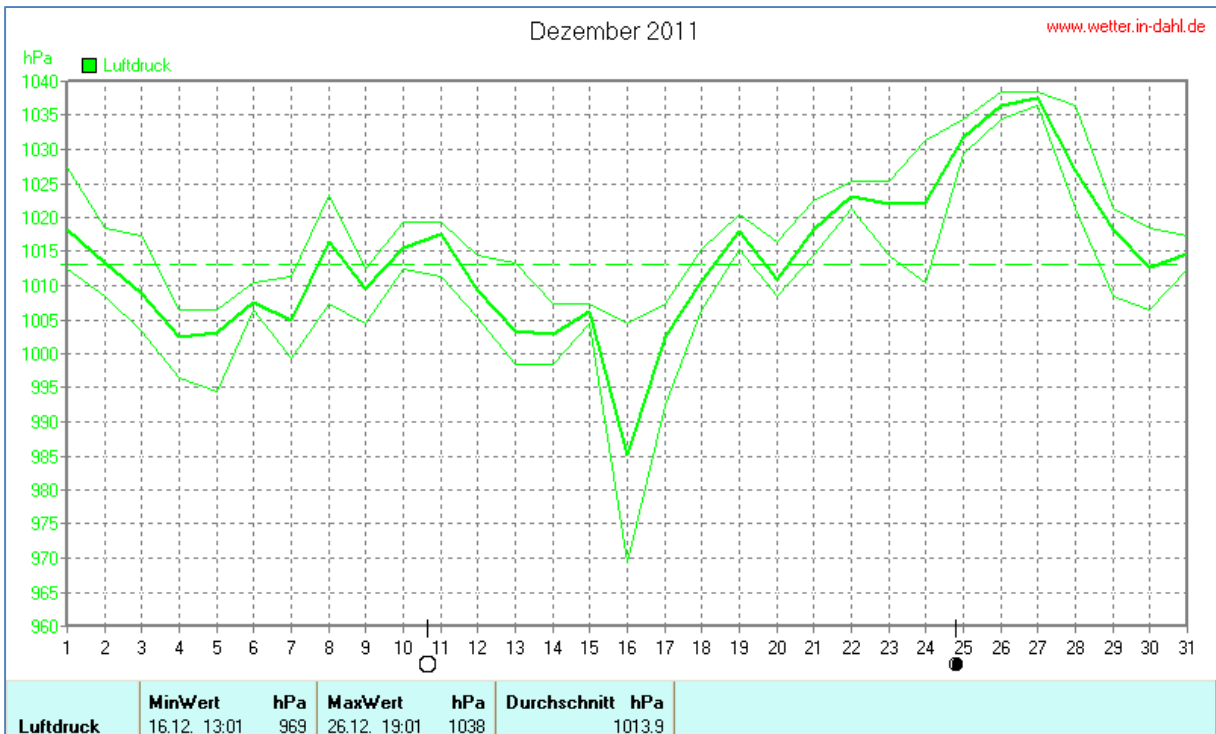


Wettertabelle und Grafiken Dezember 2011 Station Dahl

<u>Wetterdaten Dezember 2011 Station Dahl</u>							
Meßgröße	Minimum	Zeit	Datum	Maximum	Zeit	Datum	Durchschnitt
Lufttemperatur	-0,9 °C	21:33	19.12.2011	11,4 °C	06:16	02.12.2011	4,2 °C
Bodentemp.	-1,6 °C	20:33	19.12.2011	11,0 °C	06:16	02.12.2011	4,1 °C
Luftfeuchte	65%	13:53	09.12.2011	96%	04:38	23.12.2011	84%
Luftdruck	970 hPa	12:59	16.12.2011	1039 hPa	19:10	26.12.2011	1015 hPa
Wind km/h				55,8 km/h	14:29	16.12.2011	18,9 km/h
Wind °				S-SO	14:29	16.12.2011	W-SW
Regen mm				17,6 l/m ²	12:38	24.12.2011	#164,880 l/m ²
Luftdruck							#8,757 l/m ²
Sonne h				4:00 h	13:24	11.12.2011	#13:00 h

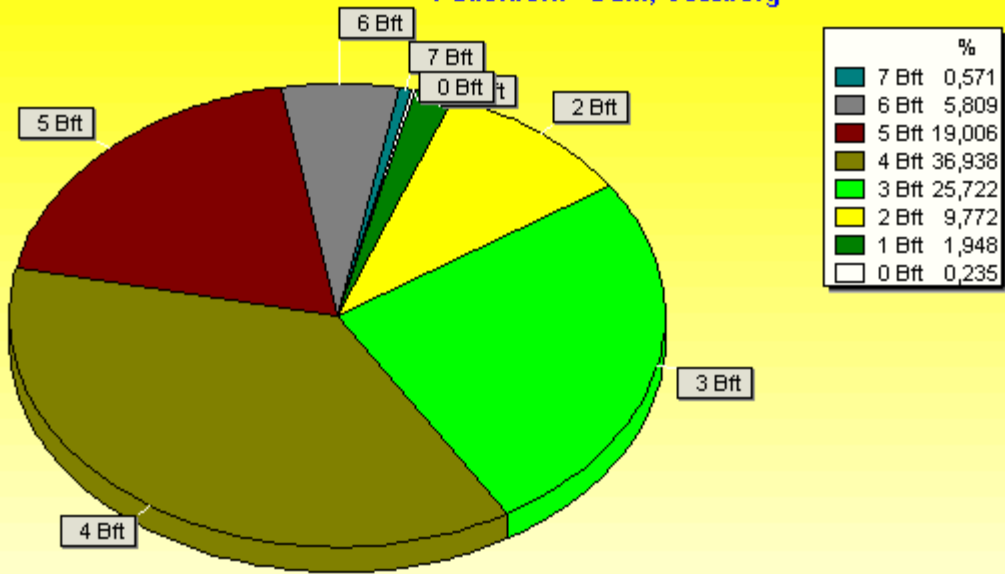






Verteilung Windstärke Dezember 2011

Paderborn - Dahl, Vossberg

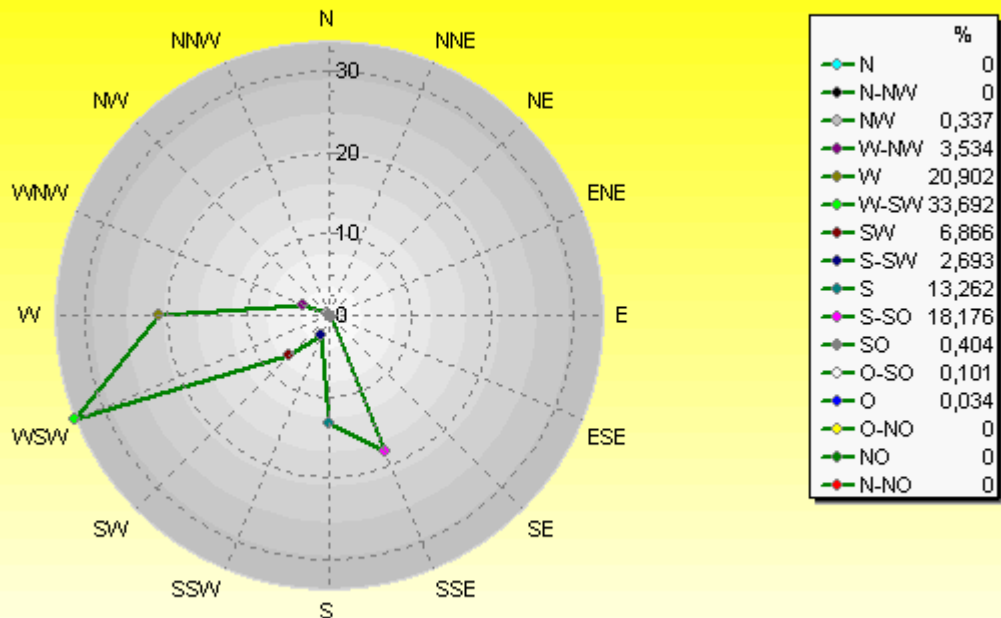


2978 Werte - Ø 23,2km/h - Max. 57,1km/h

© WzWin32

Verteilung Windrichtung Dezember 2011

Paderborn - Dahl, Vossberg



2971 / 7 Werte -> 0.2% Windstille - Ø 23,2km/h - Max. 57,1km/h

© WzWin32

