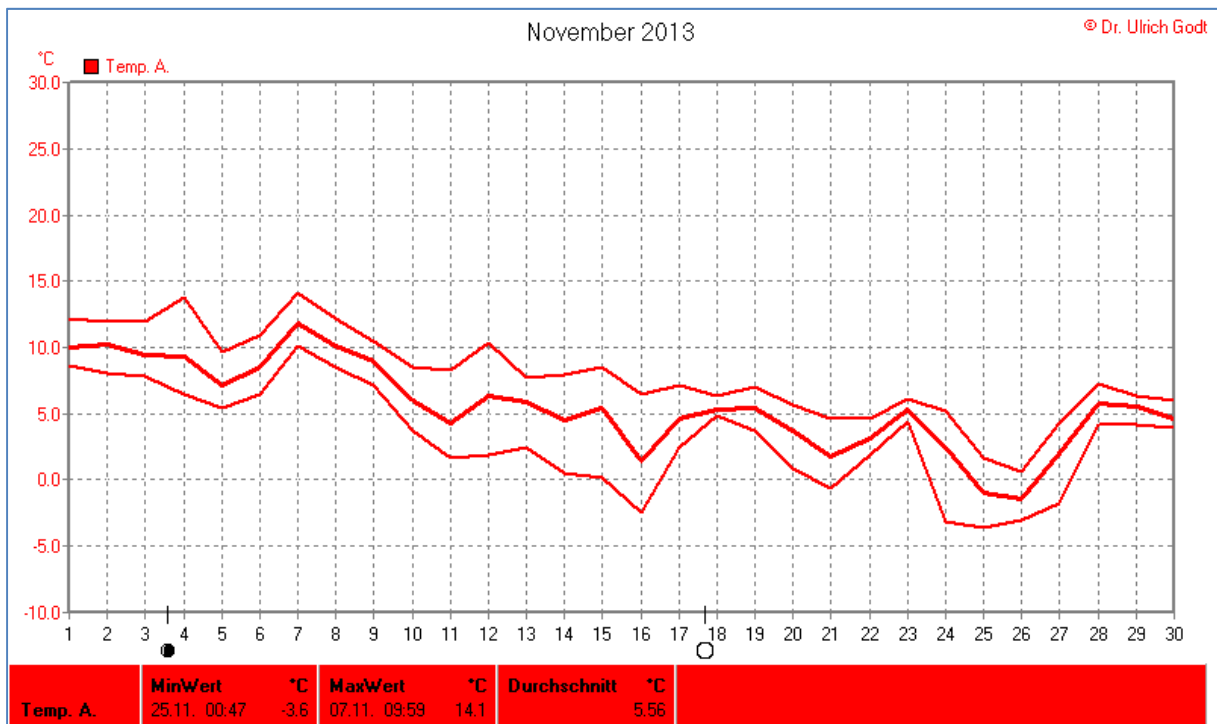
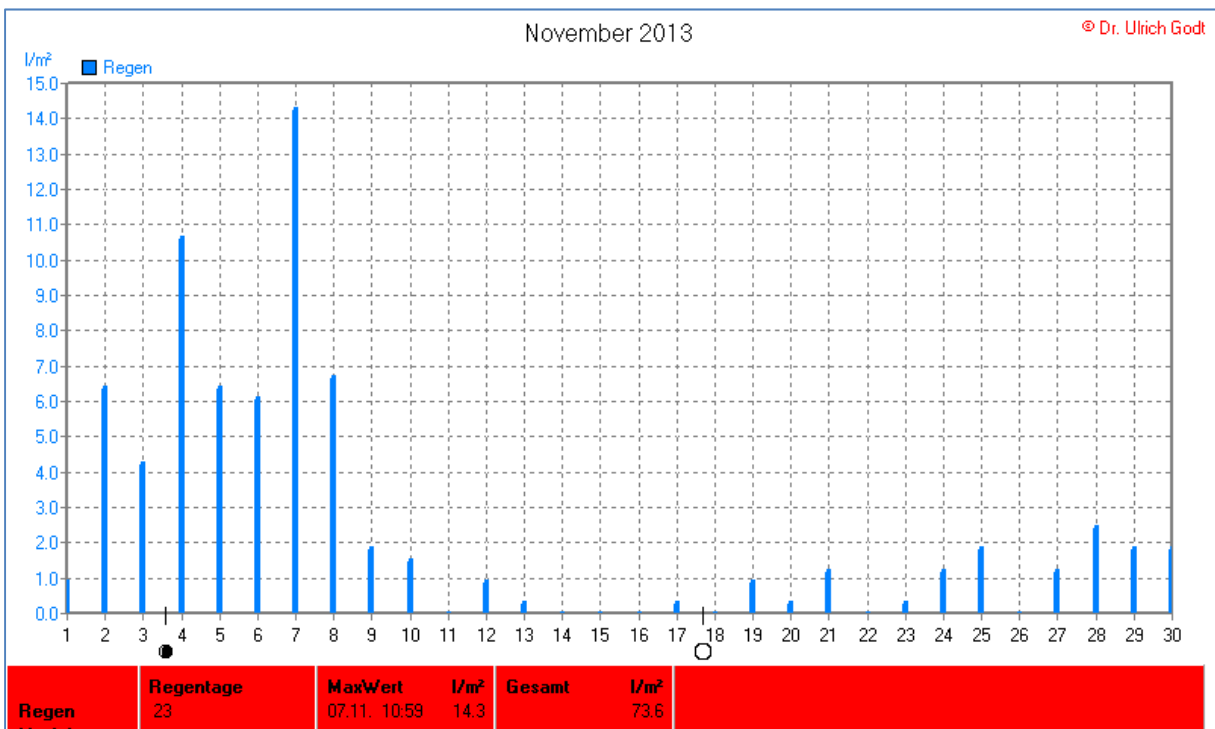
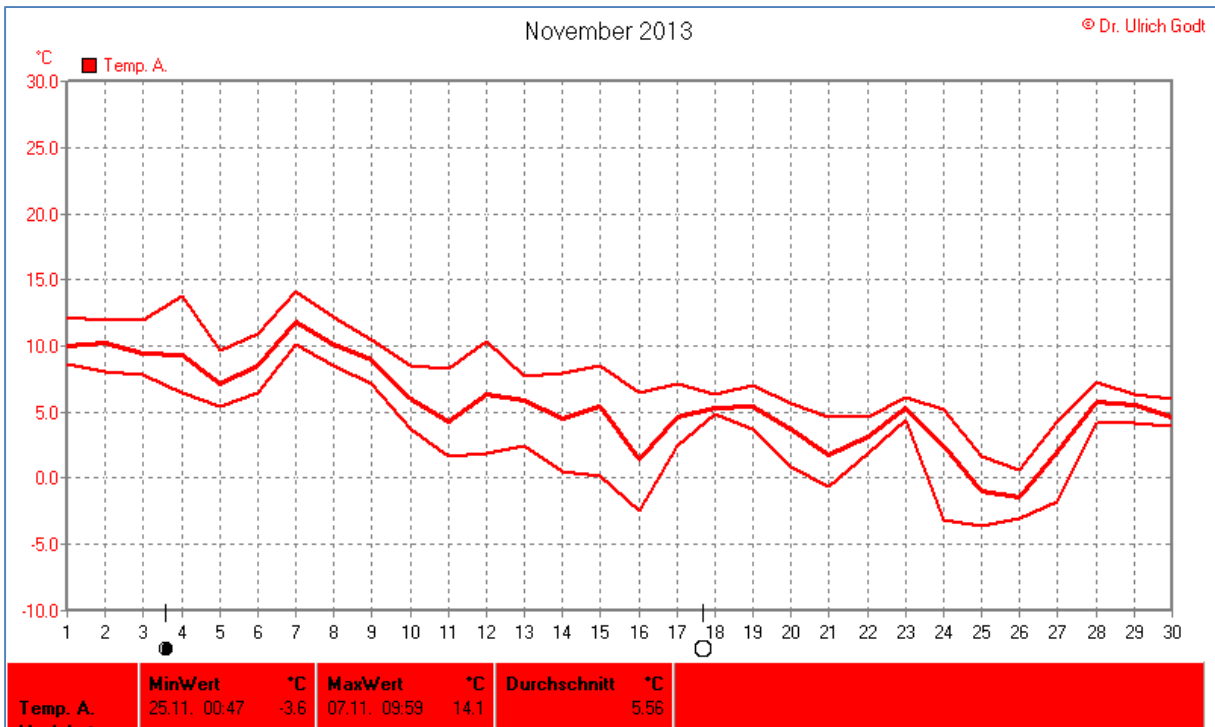
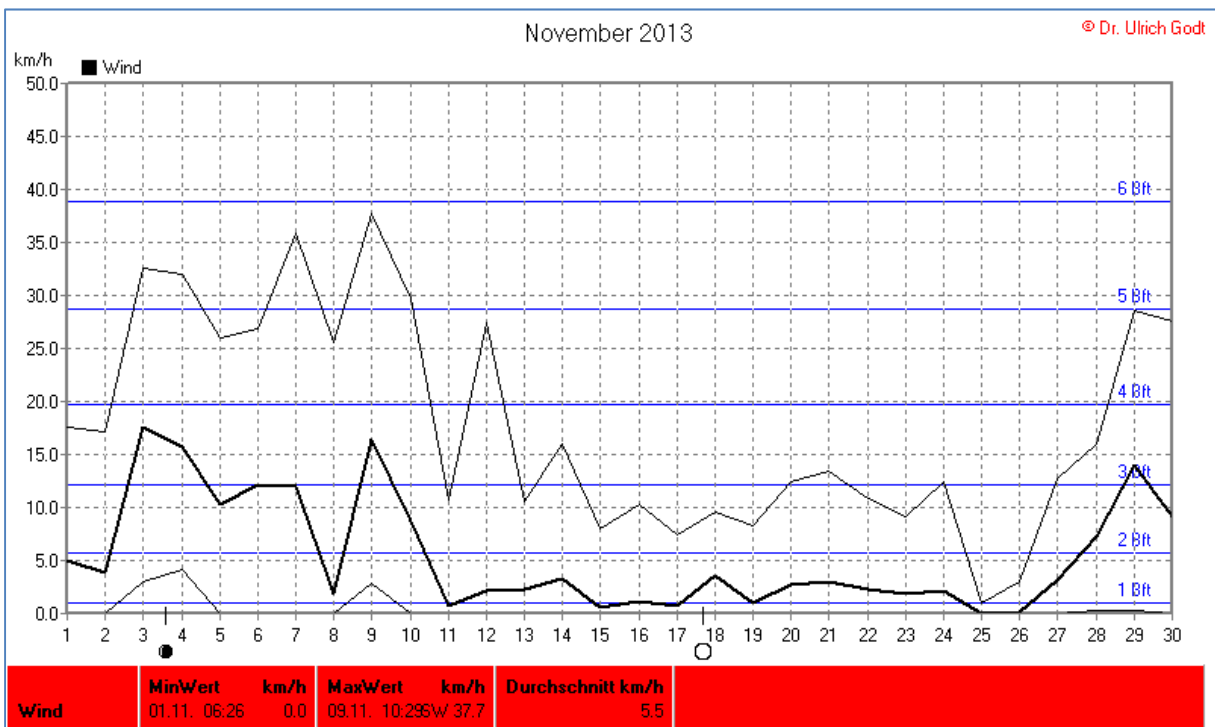
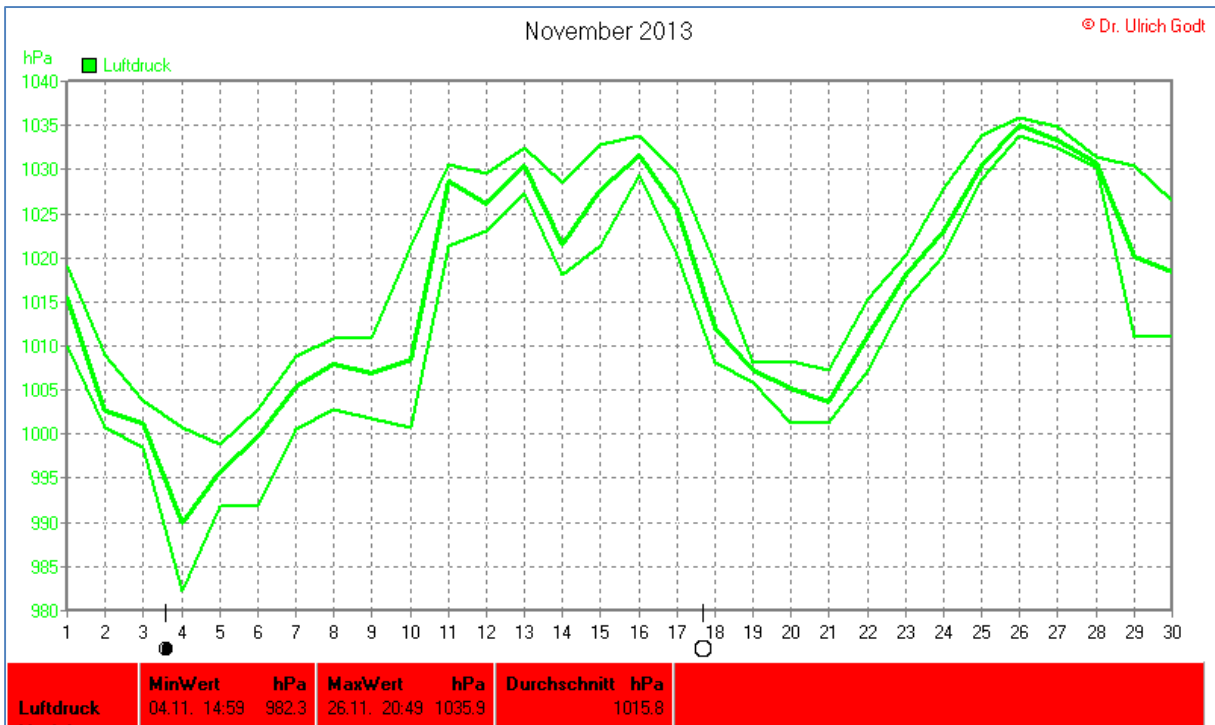


Wettertabelle und Grafiken November 2013 Station Elsen

Wetterdaten November 2013 Station Elsen							
© Dr. Ulrich Godt							
Meßgröße	Minimum	Zeit	Datum	Maximum	Zeit	Datum	Durchschnitt
Temperatur Außen	-3,6 °C	00:47	25.11.2013	14,1 °C	09:59	07.11.2013	5,6 °C
Temp.Boden	1,0 °C	00:17	25.11.2013	15,8 °C	12:44	04.11.2013	8,7 °C
Luftfeuchte	58 %	13:29	09.11.2013	99 %	22:14	04.11.2013	89 %
Luftdruck	982,3 hPa	14:59	04.11.2013	1035,9 hPa	20:49	26.11.2013	1015,8 hPa
Wind km/h				37,7 km/h	10:29	09.11.2013	5,5 km/h
Wind °				SW	10:29	09.11.2013	SW
Regen l/m ²				14,3 l/m ²	10:59	07.11.2013	#73,568 l/m ²
Sonne h				5:45 h	14:15	16.11.2013	#28:12 h

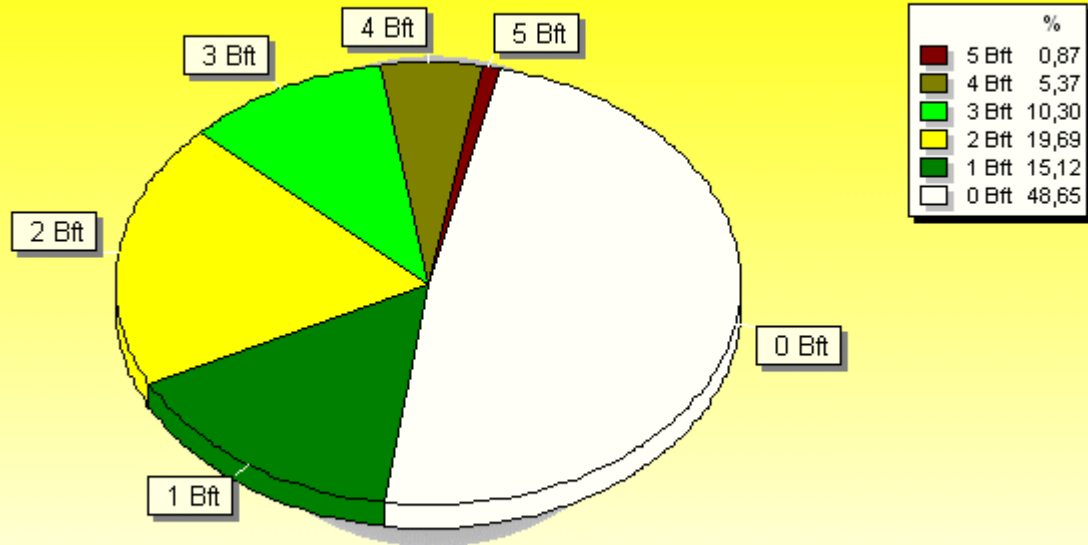






Verteilung Windstärke November 2013

Elsen, Kreis Paderborn

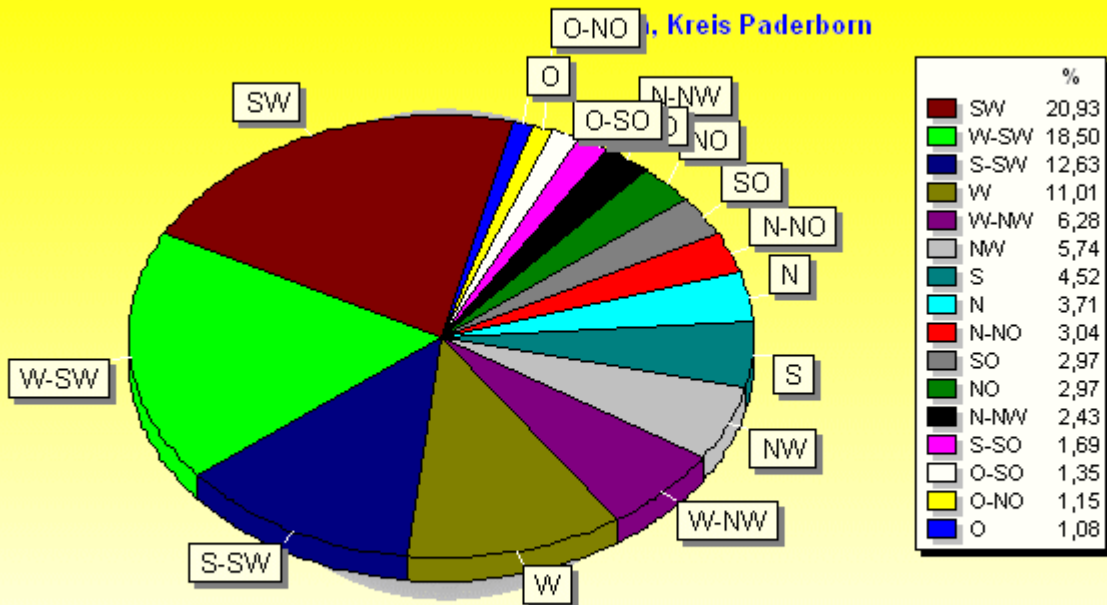


2884 Werte - Ø 5,5km/h - Max. 37,7km/h

© WzWin32 - © Dr. Ulrich Godt - Elsen, Kreis Paderborn

Verteilung Windrichtung November 2013

Elsen, Kreis Paderborn



1481 / 1403 Werte -> 48.6% Windstille - Ø 5,5km/h - Max. 37,7km/h

© WzWin32 - © Dr. Ulrich Godt - Elsen, Kreis Paderborn

