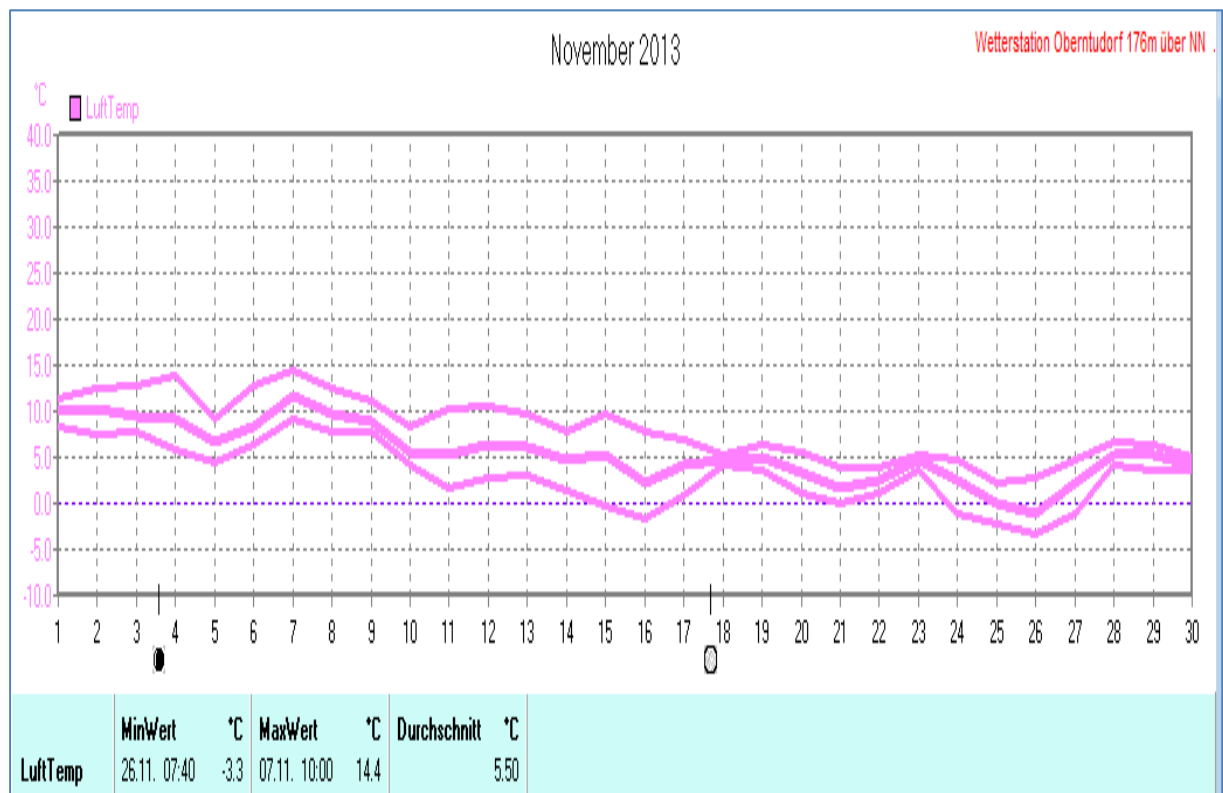
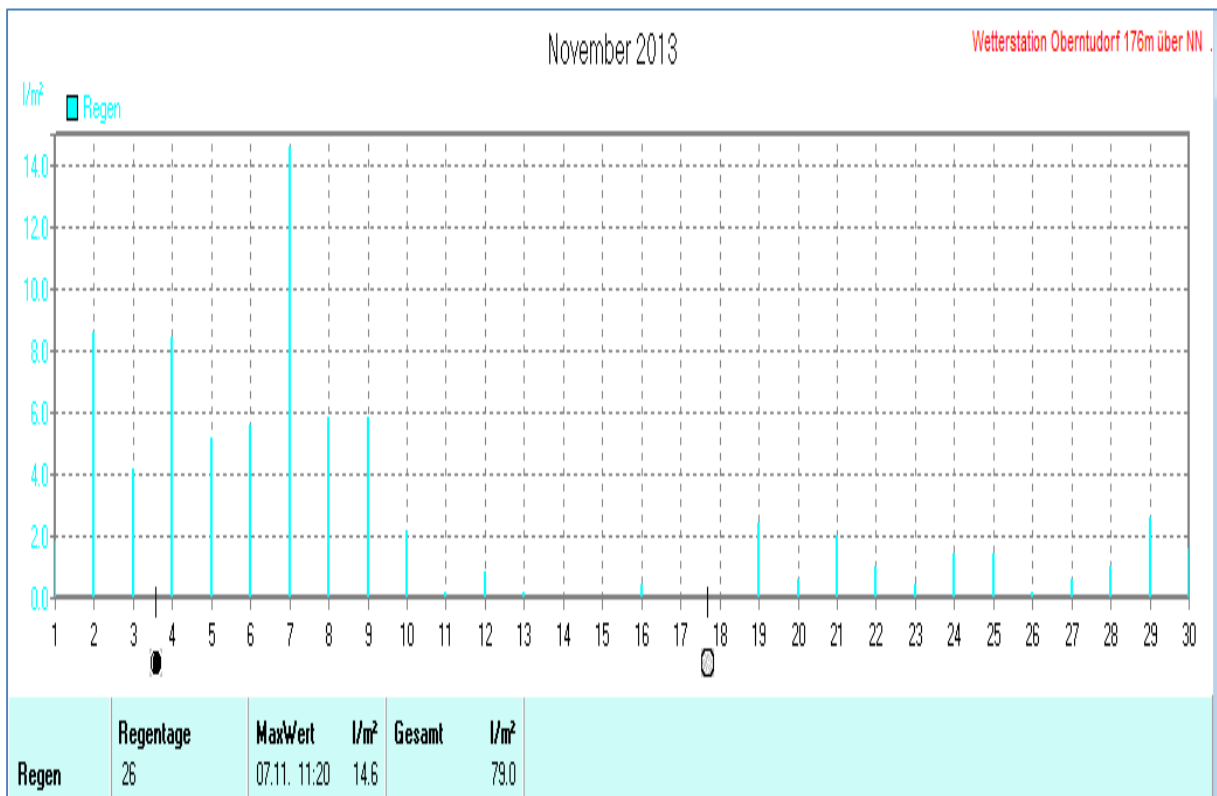
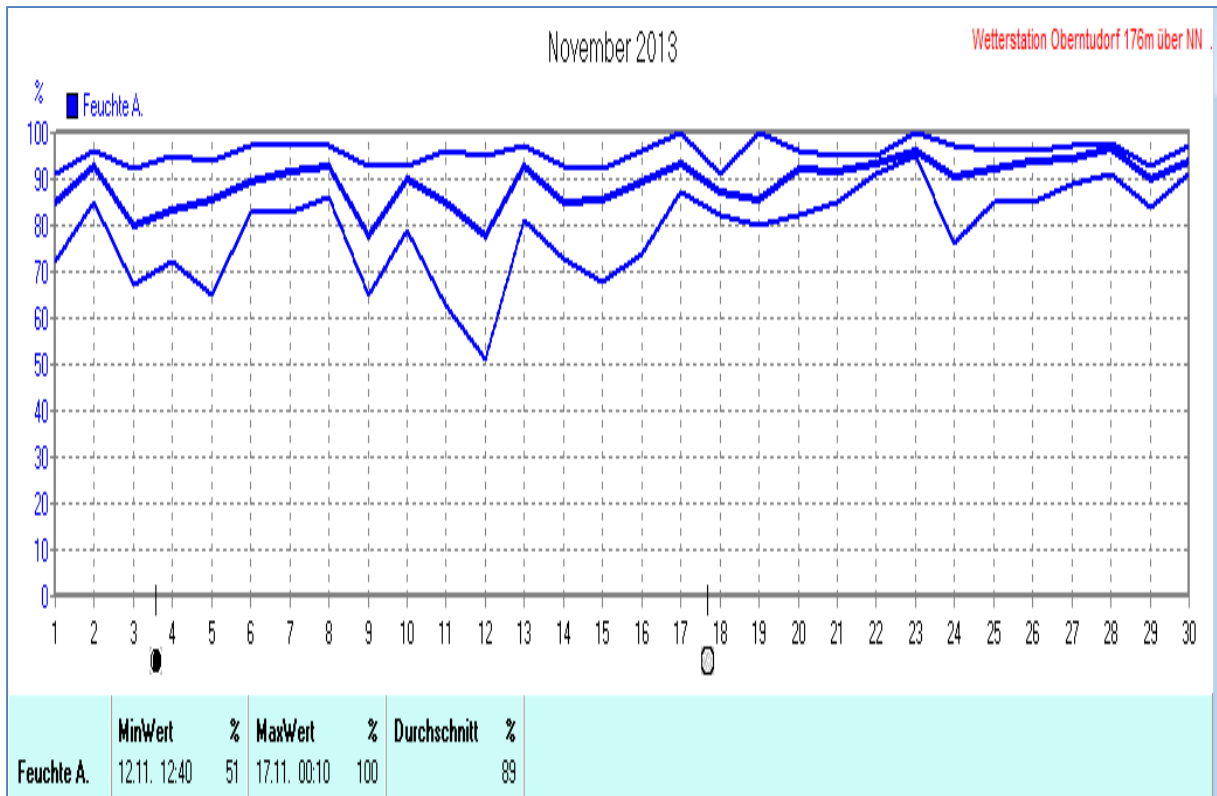
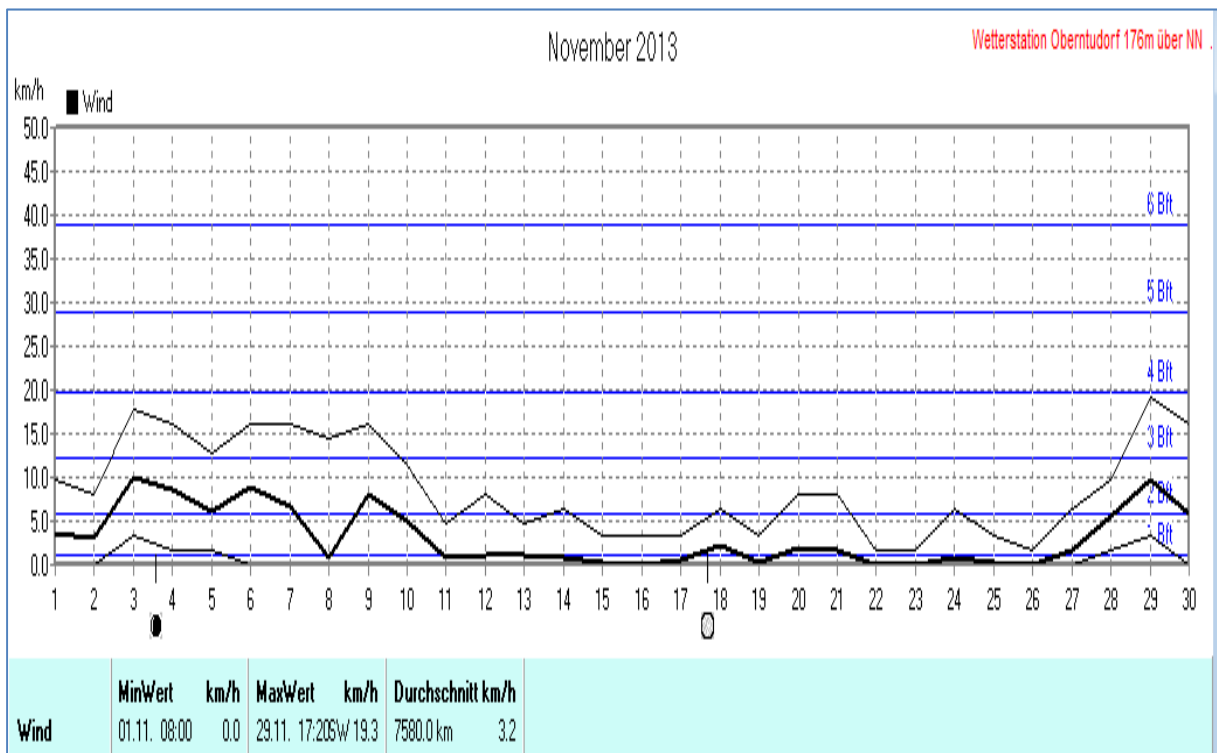
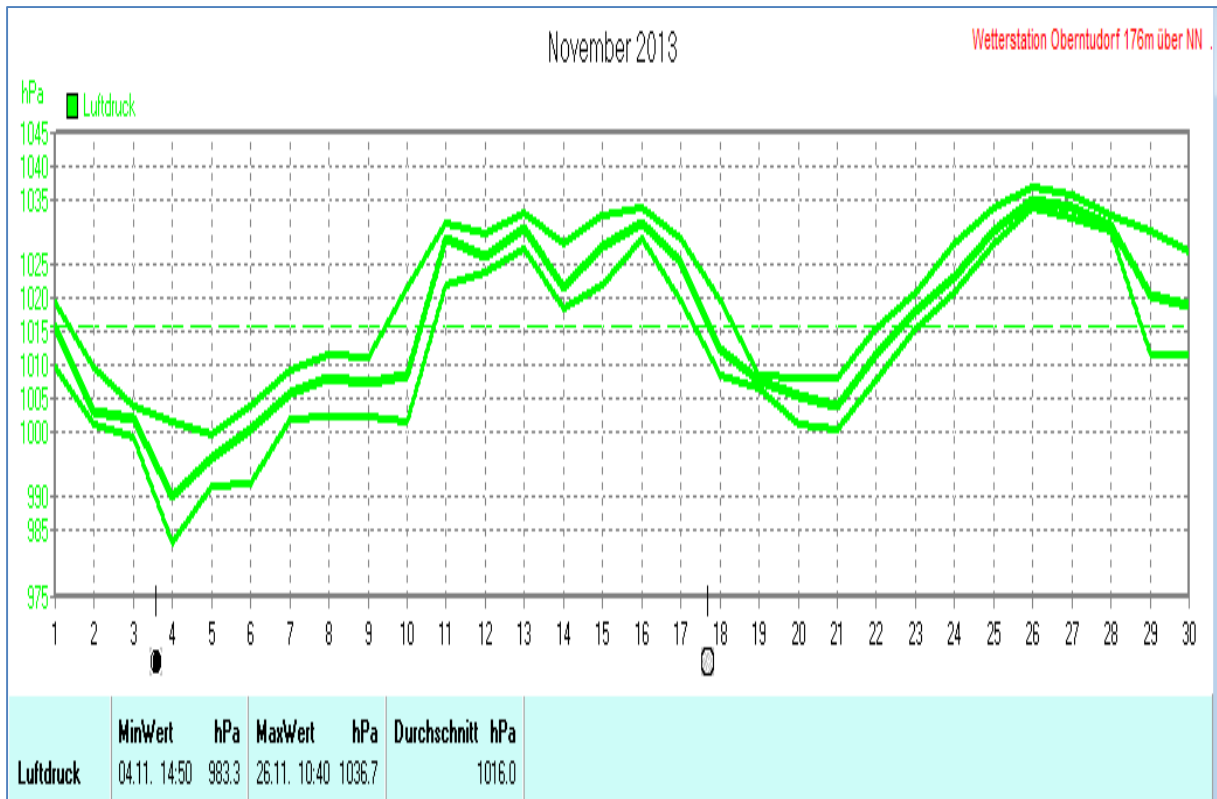


Wettertabelle und Grafiken November 2013 Station Oberntudorf

Wetterdaten November 2013 Station Oberntudorf							
Meßgröße	Minimum	Zeit	Datum	Maximum	Zeit	Datum	Durchschnitt
Lufttemp.	-3,3 °C	07:40	26.11.2013	14,4 °C	10:00	07.11.2013	5,5 °C
Bodentemp.	-3,3 °C	04:50	26.11.2013	14,4 °C	09:30	07.11.2013	3,7 °C
Luftfeuchte	51 %	12:40	12.11.2013	100 %	00:10	17.11.2013	89 %
Luftdruck	983,3 hPa	14:50	04.11.2013	1036,7 hPa	10:40	26.11.2013	1016,0 hPa
Wind km/h				19,3 km/h	17:20	29.11.2013	3,2 km/h
Wind °				W-SW	17:20	29.11.2013	W-SW
Regen l/m²				14,6 l/m²	11:20	07.11.2013	#79,000 l/m²
Evapotransp.							#10,906 l/m²
Solar				506 W/m²	11:30	04.11.2013	33 W/m²
Sonne h				6:50 h	15:50	14.11.2013	#60:10 h

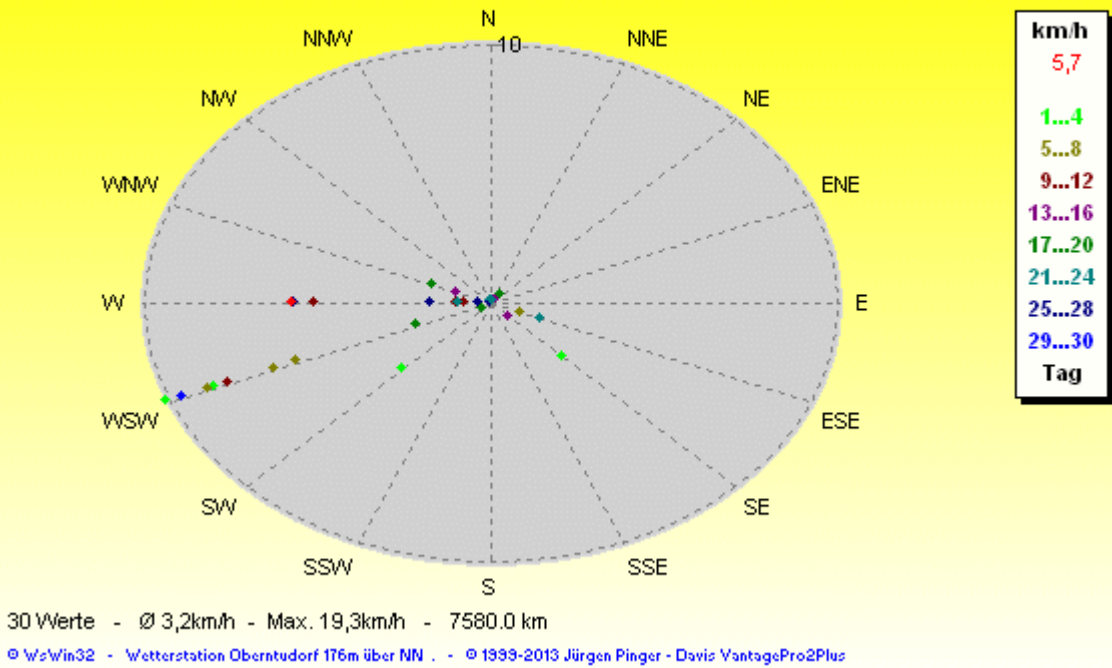






Verteilung Windrichtung/Windgeschwindigkeit November 2013

33154 Salzkotten-Oberntudorf, NRW



Windböen: Verteilung Windstärke November 2013

33154 Salzkotten-Oberntudorf, NRW

